

MAINTelligence Maximizes Maintenance Management

- Increases manufacturing capacity and quality.
- Reduces costly repairs and emergency breakdowns.
- Decreases accidents and improves plant safety.
- Complies with regulatory requirements such as OSHA, EPA, ISO 9000, and QS 9000.
- Provides superior customer service through higher product quality and timely deliveries.
- Maximizes your capacity utilization.
- Optimizes your stocking and handling of maintenance parts.
- Increases operational life of machinery, equipment and facilities.
- Ensures the correct allocation of resources (personnel, tools, contractors) to work orders.
- Decreases downtime.
- Minimizes paper work.
- Improves the Reliability, Availability, and Maintainability (RAM) of your equipment.
- Empowers decision making on the shop floor by improving access to information.

DMSI—when you are looking for real-world solutions for operations and maintenance.

For nearly two decades we've been developing practical and inexpensive solutions to the everyday problems faced by industrial, military, and transportation organizations.

You may even have used our systems without ever hearing the name **DMSI**, because many of our products have been marketed through OEM relationships. In fact, **DMSI** is a leader in the number of installed maintenance systems worldwide.

The development of the **MAINTelligence** system lets us offer the full benefit of our technology directly to industry.

The advantages are clear—industry professionals now have access to a range of maintenance solutions that combine cutting edge technology with practical functionality and ease of use. At a price that any size of organization can afford. In fact, we'd go as far as to say - these are solutions you can't afford to be without!

At **DMSI**, we are looking forward to helping you achieve your operations and maintenance goals more easily, efficiently and cost-effectively than ever before.

MAINTelligence—it is the intelligent approach to maintenance!

MAINTelligence - the intelligent approach to maintenance.™

DESIGN MAINTENANCE SYSTEMS INC.

38 Fell Avenue, Suite 201
North Vancouver, BC, Canada V7P 3S2
+1 800 923 3674
+1 604 984 3674
Email: info@desmaint.com
Web: <http://www.desmaint.com>



MAINTelligence

Asset Management

MAINTelligence - the intelligent approach to maintenance.™



The Intelligent Approach to Maximizing Asset Utilization

Keeping track has never been easier.

Designed by maintenance professionals, MAINTelligence Asset Management is built around SmartSchedule™, a powerful dynamic scheduling system that can create and administer work orders based on preventative, inspection and condition-based maintenance information.

The tools you need to plan, control and monitor all of your maintenance-based expenditures.

MAINTelligence Asset Management provides for accurate and timely maintenance tracking, cost-effective inventory control, tool crib and contractor management, root cause failure analysis, and much more...

Completely Integrated Maintenance Management

Asset Management is module within MAINTelligence. It can be used on its own or with any other MAINTelligence module—Condition Monitoring, Inspection Technology and Parts and Procurement. Whether you utilize the entire system or just the areas you need, you are always working within the MAINTelligence system – integrated software with one database.

Integrated Updates

Asset Management is comprised of several functional areas that are referred to as “Managers”. Within each Manager, are powerful integrated tools to manage your plant assets, parts, suppliers, personnel, tools, and contractors. Because each Manager is integrated, any change made in one section is automatically updated in the entire system.



Plant Asset Manager Maximize Plant Asset Usage

The Plant Asset Manager provides you with all the asset information you need to make timely decisions that maximize asset usage and minimize maintenance costs.

Track all types of equipment, components, their systems & locations.
Manage repairable spares, components and sub-assemblies through their entire lifecycle — from acquisition and installation, through repair cycles and to eventual replacement.
Customize asset information with user-defined fields for any class of facility, equipment or component.
Enter meter data for tracking usage, mileage, etc. directly, or automatically acquire it from a variety of data sources.
Use bar coding to design and print labels for assets providing increased mobility and system functionality.
Track extensive asset information: Criticality, Status, Manufacturer /service / support contacts, Warranty information, Nameplate data, and so much more!
Track it all — work histories, operational event logs, current condition status and costs for all of your assets.

Parts / Suppliers Manager Control Inventory

The Parts / Suppliers Manager allows you considerable savings through a well-managed parts inventory system.

Control your inventory of spare parts, lubricants, and other consumable items.
Identify obsolete parts and ensure stock levels reflect current usage.
Avoid work delays due to unavailable spares by using the spare-parts bin feature for more accurate and efficient storeroom management.
Share information on spare parts across multiple storage locations (warehouses / oil houses / docks, etc.).
Utilize tools to monitor and control the inventories of storerooms—including Economic Order Quantity (EOQ) and ABC Class calculations and assignment.
Make timely decisions with easy access to all your part / supplier purchase history.
Automatically cross-reference to the Bill Of Materials (in Plant Manager).

Personnel Manager Ensure Manpower Availability

Assign personnel to work by availability or by capability by utilizing employee and trades information.

Record employee information: numbers, name, address, contact information, pay scale, holiday entitlement and training.

Tools Manager Track Your Tools

The Tools Manager provides the information you need to ensure your tools are available and in good working order when you need them. You can control sign in / sign out by tool or by user, record last calibration date, and maintain calibration histories; reserve tools by scheduled tasks and through Work Order requests; and track specialized tools required for specific tasks / work orders.

Contractor Manager Track External Labor

The Contract Manager lets you incorporate contractors and out-source labor information—keeping track of your external labor costs as they become increasingly important in all operations and maintenance environments.

Features that give you control...

Maintenance Scheduling

Automate Work Orders based on PM Data

Automatically create work orders and change the schedule and priority of outstanding work orders using alarms or knowledge-based diagnostics generated by MAINTelligence Inspection or Condition Monitoring modules.

Develop maintenance schedules that respond to changes in the plant environment with MAINTelligence interface to the Condition Monitoring module and operational planning system.

Control the scheduling of Preventative Maintenance tasks for any of the facility, equipment and component items in the database.

Group tasks together in a "task route", and/or schedule as a single item.

Numerous scheduling options available to trigger tasks and generate work orders:

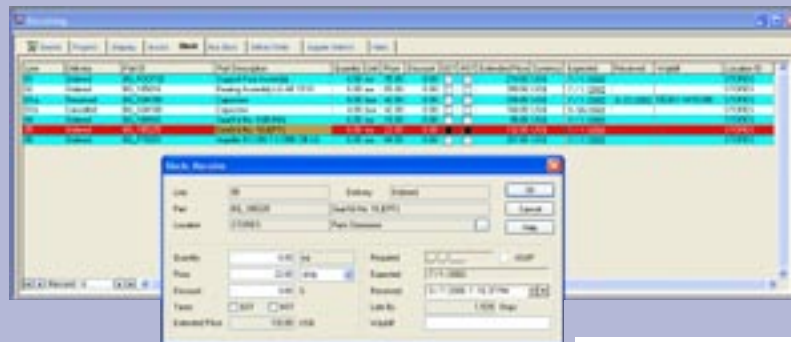
- Schedule by calendar, both fixed and elapsed dates.
- Schedule by meters, such as: operating hours, mileage, production counts etc.
- Schedule by equipment condition, alarms or knowledge-based diagnostics.
- Operations / Production schedules.
- Opportunistic scheduling (based on machinery availability).

Purchasing and Stores Management

Maintain Optimal Inventory

MAINTelligence offers a complete Purchasing and Stores Management module that tracks all maintenance parts and supplies, with automatic parts requisition based on stocking levels and direct matching of parts requisitions to individual work orders.

- Triggered Notification / Reorder of "Below Minimum On Hand Level" status for parts in inventory.
- Flexible Receiving - receive, back order or cancel any amount on order, split quantities for individual line items, apply individual discounts to items.
- Inventory/Bin Label Printing.
- Bar code management of parts fully integrated into system.
- Data Import/Export - use MAINTelligence's extensive import /export capability to send/receive purchasing information to your accounting /cost management systems.



Work Requests

Follow the Progress

MAINTelligence allows designated plant personnel to submit maintenance requests to the maintenance planner and track the progress of their work request from request approval through to completion. Work requests can be entered directly, or accessed via a browser or via e-mail.

Work Orders

Track Past, Present, and Future

From installing new equipment, carrying out preventive maintenance work, or managing critical shutdowns, Work Orders tracks all aspects related to work performed on assets. The ability to track and manage work requests, labor, planning, and scheduling allows companies to make the most of their resources while improving productivity.

- Approve tasks / requests upon entry, or approve several tasks / requests at once.
- Assign priority status, labor time, parts, tools, contractors, and costs to each work order.
- Parts inventory records are updated automatically.
- Work Order backlog provides outstanding Work Orders lists searchable by any field.
- Capture meter readings, downtime and/or lost production on work order records.
- Manage work order assignments—view all work orders, or all work orders assigned to or by a particular person.
- Record work already completed quickly and easily via non-scheduled or emergency work orders.

Reports and Graphs

Create the Exact Report You Need

MAINTelligence includes a large variety of reports, which can be sorted and filtered according to your preferences and requirements. The built-in Report Editor makes it easy to modify any report or label in MAINTelligence—or you can create your own reports from scratch.

Include drawings, images, graphs, checklists, detailed instructions and special notes on your work orders and reports.

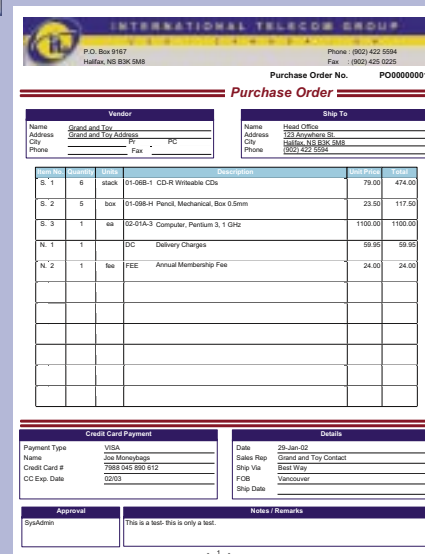
Customize reports with your company's logo, and control colors, fonts, page numbering method, and record separator lines.

Preview on-screen with pan, scroll, and zoom options.

Print, export to Excel, Word, PDF, e-mail—even web pages—or fax the reports through your fax modem.

Instantly generate a bar code and add to a report or label.

Custom Reports



Additional Features

Intuitive and Powerful Features

MAINTelligence has an intuitive user interface—you get quick access to the scheduling, work management and reporting tools that you use everyday.

All of your maintenance and reliability data can be viewed with a single mouse click. Finding assets is fast as Data Managers have a combination of hierarchical and list views that let you find what you are looking for quickly and easily. The result is maximum utilization by the end users and a significant reduction in start-up, implementation and training costs.

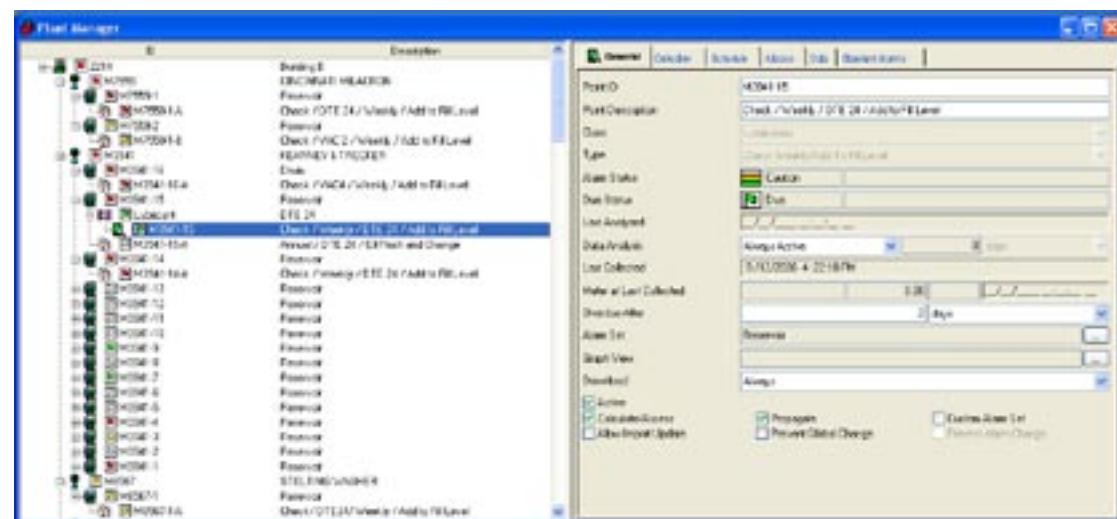
Job Overdue Status and Condition Alarm Status can be seen on the Plant Hierarchy and List Views at all times.

Data Entry forms are consistent and easy to understand.

Powerful find-and-replace capability makes bulk data edits easy.

Unlimited query and report capabilities.

Simply right mouse click for all object actions (editing, scheduling, and data display).



Advanced Database Management

Access Control, Audit Trail Management, Database Replication

A host of database management tools to make your job easier...

Administrators can easily add and maintain users, groups, group permissions, and object permissions. The advanced design ensures that different users see different features of the MAINTelligence system according to your specifications.

For added security, you can activate audit trail logging of all user actions; MAINTelligence audit trail is designed to help you meet the record-keeping requirements of 21 CFR Part 11 and other quality system requirements.

MAINTelligence's database is fully ANSI SQL 92 compliant.

Optional database replication functionality lets you carry out bi-directional replication of MAINTelligence databases, in real time, over your LAN, WAN or over the Internet.

MAINTelligence also includes utilities for database backups, archiving old records and service requests, database exports (to Excel, ODBC, ASCII and XML formats), and importing records from other databases.

Handheld Portability for Workflow Management

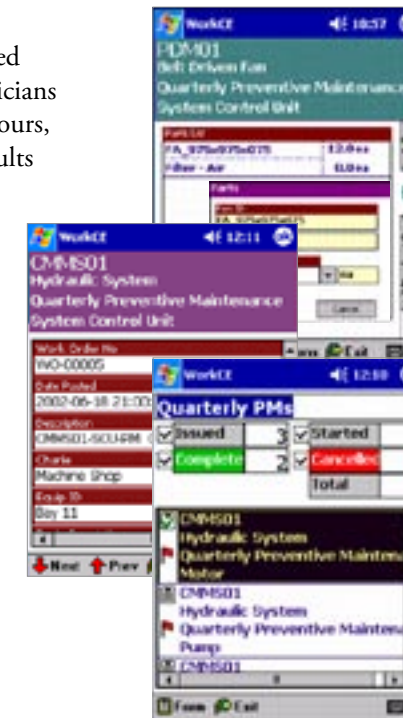
MAINTelligence handheld solutions offer a wired upload/download solution or a real-time wireless solution—all in the same package. The unit fits into a shirt pocket or can be belt-holstered.



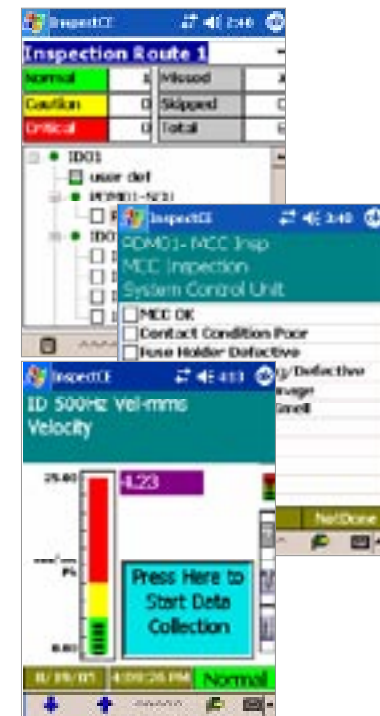
WorkCE™ A Mobile System for Reviewing and Generating Work Orders

MAINTelligence works with the WorkCE handheld system to give greater control over maintenance task management. Use the WorkCE handheld to initiate work requests, manage work orders or requisition parts.

Work orders are first transferred into the WorkCE unit. Technicians use the PDA to record their hours, work order status, and the results of the work. At the end of the shift, or the day, all of the completed work orders are automatically transferred to your MAINTelligence database during upload.



InspectCE™ Record and Review PM Data on Routes



MAINTelligence also operates with the InspectCE™ handheld system to automate the time-consuming process of carrying out operations and maintenance-based inspections. This includes the capability to create inspection routes, enter specific measurement points and the elements to be measured, and record the results.

In addition, this system facilitates the use of Risk-Based Inspections (RBI). The easily accessible data results in improved asset performance, decreased lost-labor time, and increased availability of assets.